



# **LAZER** CASE STUDY LOGISTICS

How a Meat Processing Plant Used Spotlight YMS to Avoid a \$300K Trailer Loss



## BACKGROUND

A large meat processing plant relies on transporting its perishable goods across the United States. The company operates within a highly competitive market where efficiency and reliability are paramount.

To maintain its competitive edge and ensure seamless operations, the company partnered with Lazer Logistics and adopted its cutting-edge Yard Management System (YMS), Spotlight.





## THE INCIDENT

In a recent delivery, a trailer carrying more than \$300,000 worth of perishable product experienced spoilage upon arrival at its destination. The incident raised concerns about liability and accountability between the company and its client.

Utilizing Spotlight's robust data tracking capabilities, including images, Lazer's YMS demonstrated that the trailer had been within the specified range throughout its time in the yard and upon departure.

This comprehensive tracking data shielded the partner and Lazer Logistics from liability, showcasing the system's pivotal role in mitigating risks and protecting stakeholders.





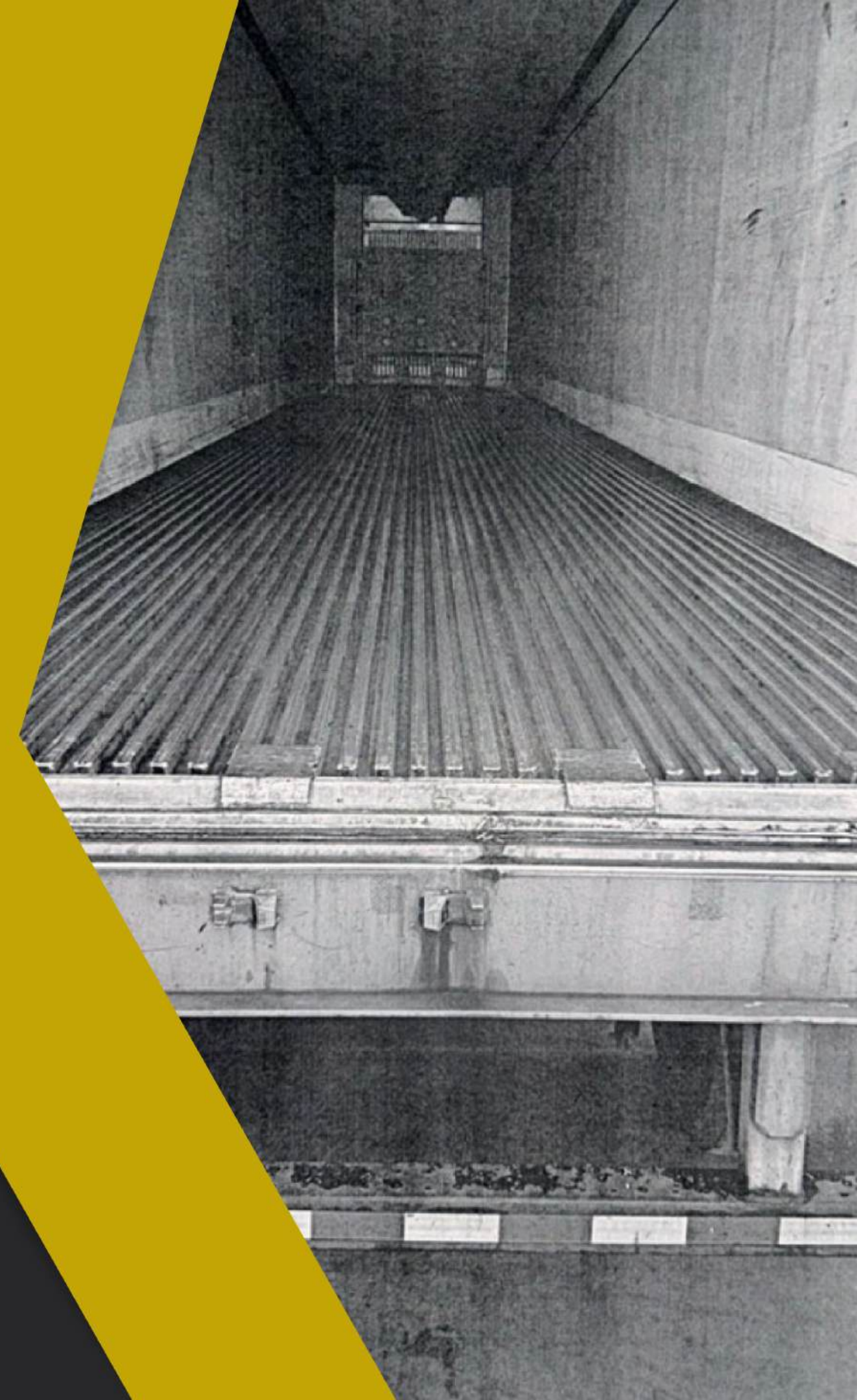
## FAST-TRACKING EFFICIENCIES

Efficiency is the cornerstone of success. Spotlight is a state-of-the-art SaaS-based YMS engineered to redefine yard operations.

Spotlight transcends traditional yard management software by offering comprehensive visibility and real-time tracking of in-yard freight.

Designed by supply chain experts for supply chain operators, Spotlight boasts an intuitive, easy-to-use interface that empowers users with unparalleled control over their yard operations.

Its seamless implementation process ensures swift integration into existing workflows, minimizing disruptions and maximizing efficiency.





## KEY FEATURES OF SPOTLIGHT YMS

- **Gate Management** – Spotlight facilitates gate operations through an Android device, enabling seamless tracking and managing inbound and outbound freight. The system supports customizable entry tasks and validates carriers' paperwork and equipment status, ensuring compliance and efficiency.





## KEY FEATURES OF SPOTLIGHT YMS

- **Real-time Tracking** – Spotlight provides real-time visibility of trailers within the yard, enabling precise monitoring of movements and statuses. This feature proved instrumental in validating the trailer details in question, thereby exonerating our partner from liability.





## KEY FEATURES OF SPOTLIGHT YMS

- **Integration Capabilities** – The system seamlessly integrates with Warehouse Management Systems (WMS), enabling streamlined workflows and enhanced operational efficiency. Real-time data exchange between systems optimizes processes and facilitates informed decision-making.





## UNIQUE BENEFITS AND OUTCOMES

Spotlight offers more than a slew of features; it delivers tangible benefits that directly impact the bottom line. Clients who leverage Spotlight experience significant reductions in yard service hours, increased productivity, and improved operational efficiency.

Customers have experienced a 35% increase in hooks per hour (HPH), which has enabled faster turnaround times and enhanced customer satisfaction.

Spotlight minimizes detention fees and enhances product protection, contributing to cost reduction and risk mitigation. Spotlight equips businesses with the tools to adapt and thrive by providing actionable insights and data for planning and forecasting.





## CONCLUSION

By leveraging Spotlight's advanced features and capabilities, our customer safeguards its reputation and enhances operational efficiency and customer satisfaction.

With Lazer Logistics as its strategic ally, this processing leader is well-positioned to navigate the complexities of the modern supply chain landscape and remain a lynchpin in the meat processing industry.



**YOUR SINGLE-SERVICE PROVIDER  
FOR YARD LOGISTICS**

(888) 886-6851 • [www.lazerlogistics.com](http://www.lazerlogistics.com)

